

Application Materials

www.biostat.wustl.edu/sipid

1. Application Packet must include:

- Application form
- Curriculum vita
- Statement of research interest in genetic epidemiology

2. Letter of support from Department Chair

3. Apply early. Rolling admissions until all slots are filled, with a target deadline of April 1, 2011.

4. Documents mailed to:

Washington University School of Medicine

Division of Biostatistics

Attn: Linda Schreier

SIPID-GE Program Administrator

Campus Box 8067, 660 S. Euclid

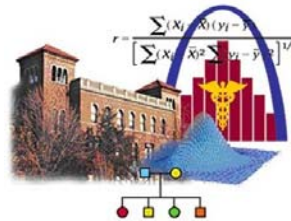
St. Louis, MO 63110

PH: 314-362-1565

FAX: 314-362-2693

Email: sipid-ge@wubios.wustl.edu

Application materials may be downloaded from the website.

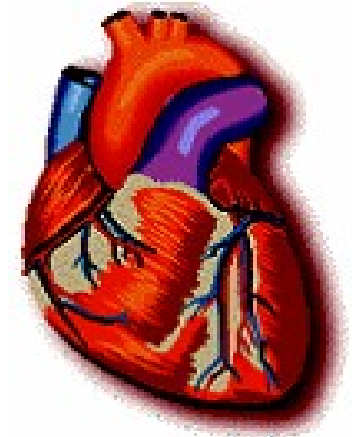


The Division of Biostatistics

has earned a national and international reputation as a research center of excellence. It plays leadership roles on several NHLBI-funded multicenter cardiovascular family studies.

Summer Institute in Genetic Epidemiology,

with a focus on Cardiovascular
and other Heart, Lung, Blood,
and Sleep Disorders



SIPID-GE

New Cohort
Summer 2011

Tentative dates:
July 25-August 11, 2011

Summer Institute in Genetic Epidemiology

with a focus on Cardiovascular, and other Heart, Lung, Blood, and Sleep Disorders

Washington University in St. Louis, School of Medicine, now offers an *all-expense-paid* summer institute in genetic epidemiology, sponsored by the NHLBI for the purpose of increasing diversity in the biomedical research workforce. Junior faculty from Under Represented Minority population groups and faculty with disabilities qualify for this opportunity.

The summer institute is designed to prepare the participants to work at the interface of genetic epidemiology, bioinformatics, cardiovascular disease, and other heart, lung, blood and sleep disorders.

The program includes:

- Two 3-week summer sessions, tentative dates July 25-August 11, 2011
- Didactic courses in Fundamentals of Genetic Epidemiology and Bioinformatics (tuition-free)
- Brief mid-year meeting for all participants with their mentors
- Workshops and lectures on cardiovascular epidemiology and other Heart, Lung, Blood and Sleep Disorders
- Workshops in grants-writing

- Excellent opportunity to develop research skills necessary for genetic dissection of cardiovascular disease and risk factors
- Opportunity to develop a network of collaborators and resources to conduct research in the genetic epidemiology of cardiovascular disease and risk factors

Core Curriculum

- Bioinformatics: Gene Expression, Data Mining and Pattern Recognition
- Fundamentals of Genetic Epidemiology: Heritability, Segregation, Linkage, Association Analysis
- Survey lectures on special topics
- Hands-on computer labs

Prospective Participants

- Junior faculty with interests in pursuing genetic epidemiology research with a focus on Cardiovascular and other Heart, Lung, Blood, and Sleep Disorders and
- Who are from an under represented minority (URM) population group, or
- Who have a disability

Program Faculty

Faculty include world renowned Genetic Epidemiologists such as:

D.C. Rao, Ph.D., Program Director, who is one of the early pioneers of the field with substantive research interests in cardiovascular genetic epidemiology, is the founding editor of the journal Genetic Epidemiology, and an early president of the International Genetic Epidemiology Society.

Victor Davila-Roman, M.D., Program Co-Director, is a renowned Cardiologist and an outstanding cardiovascular geneticist with established research programs in the fields of cardiac imaging and hypertension.

Treva Rice, Ph.D., Program Co-Director and Course Master, is an outstanding genetic epidemiologist with research preeminence in the effects of gene-environment interactions involving nutrition and physical activity on cardiovascular disease and risk factors.

C. Charles Gu, Ph.D., Course Master, is a renowned researcher in statistical genetics and bioinformatics, with extensive experience in studies of complex traits including cardiovascular risk factors. He is an active and respected educator and mentor.

A host of other internationally renowned and outstanding faculty leaders from Washington University and other leading programs also participate in this program such as: Donna Arnett (University of Alabama), Ingrid Borecki, Ross Brownson, Mario Castro, James Cheverud, Shweta Choudhry (University of California, San Francisco), F. Sessions Cole, Michael DeBaun, Lisa de las Fuentes, James Gavin III (Emory University), Aldi Kraja, J. Philip Miller, Aubrey Morrison, Michael Province, Susan Racette, John Rice, Kenneth Schechtman, James Sowers (University of Missouri-Columbia) and Alan Templeton.